

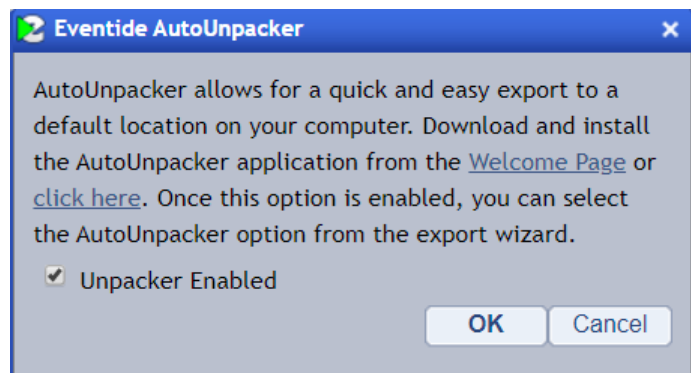
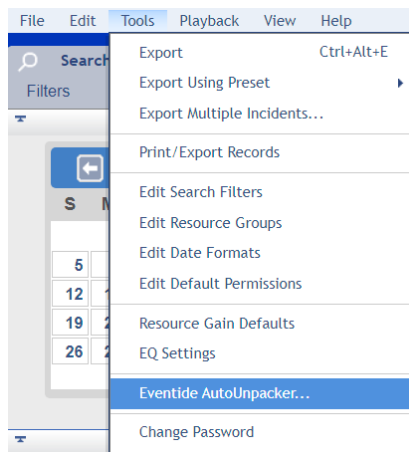
Eventide AutoUnpacker

Overview

Eventide AutoUnpacker allows for a quick and easy export to a default location on your computer. Exported media can be automatically downloaded and decompressed to your defined default location by using Eventide AutoUnpacker. To use this option, it must be installed and enabled first from the Tools menu under Eventide AutoUnpacker within MediaWorks Plus.

Enable Eventide AutoUnpacker

Log into MediaWorks Plus as you normally would to retrieve and playback calls and from the **Tools** menu at the top select **Eventide AutoUnpacker...** When the Eventide AutoUnpacker window opens, place a check mark next to **Unpacker Enabled** to enable feature. At this point you can also click the link for the [Welcome Page](#) or [click here](#) link to be able to download the Eventide AutoUnpacker application to be installed on your computer in the next section. Click **OK** when done.



Install Eventide AutoUnpacker Application

If not already done so from previous section, download the Eventide AutoUnpacker installation file by connecting to the NexLog Welcome screen in your web browser and clicking the link for [Download AutoUnpacker for Windows 7 and higher](#).



Go to:

Configuration Manager

MediaWorks Plus

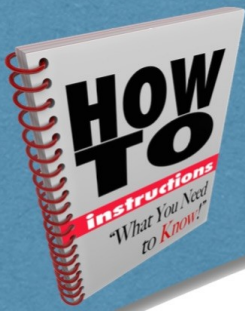


Manuals:

- [Download the manual for Eventide NexLog](#)
- [Download the manual for MediaWorks Plus and Desktop](#)
- [Download the manual for Eventide Quality Factor Software](#)

Useful Links:

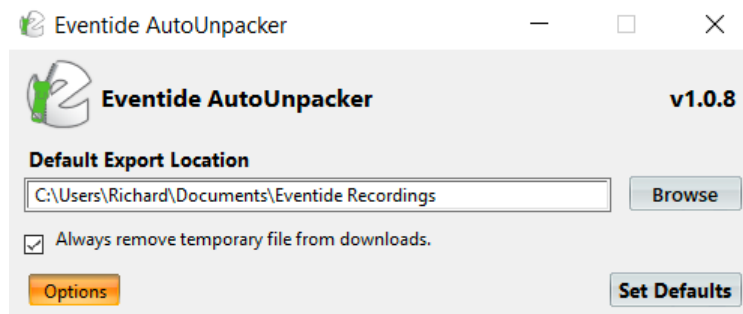
- [Download MediaWorks Plus Desktop for Windows® 7 and higher](#)
- [Download MediaAgent Plus for Windows® 7 and higher](#)
- [Download Screen Capture Agent for Windows® 7 and higher](#)
- [Download AutoUnpacker for Windows® 7 and higher](#)



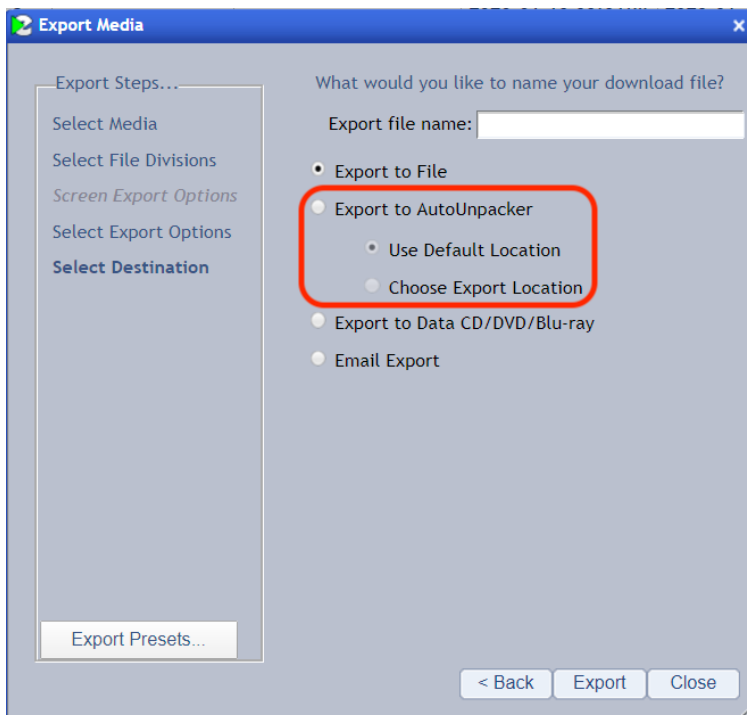
Eventide AutoUnpacker

Once the installer file has been downloaded, locate and run the [Eventide_AutoUnpacker.msi](#) file to begin installation. Follow the on screen prompts to complete the install clicking **Yes** to any User Account Control prompt that may pop up asking if you want to allow this app to make changes to your device.

Once installation is completed, confirm or choose your Default Export Location and click **Set Defaults** button in the Eventide AutoUnpacker application.



You should now be able to select the AutoUnpacker option from the export wizard in MediaWorks Plus to utilize it.



For additional inquiries you can contact us at:
support@interactionic.com
(800) 285-2950

