

## How to Configure Internet Explorer for Quantify

### Install Microsoft .NET Framework 3.5

Microsoft .NET Framework 3.5 is essential for using the Media Player in Quantify Search & Replay. Verify Microsoft .NET Framework 3.5 is installed on the computer you are configuring Internet Explorer for use with Quantify. You may need to consult your IT Help Desk to install or verify this.

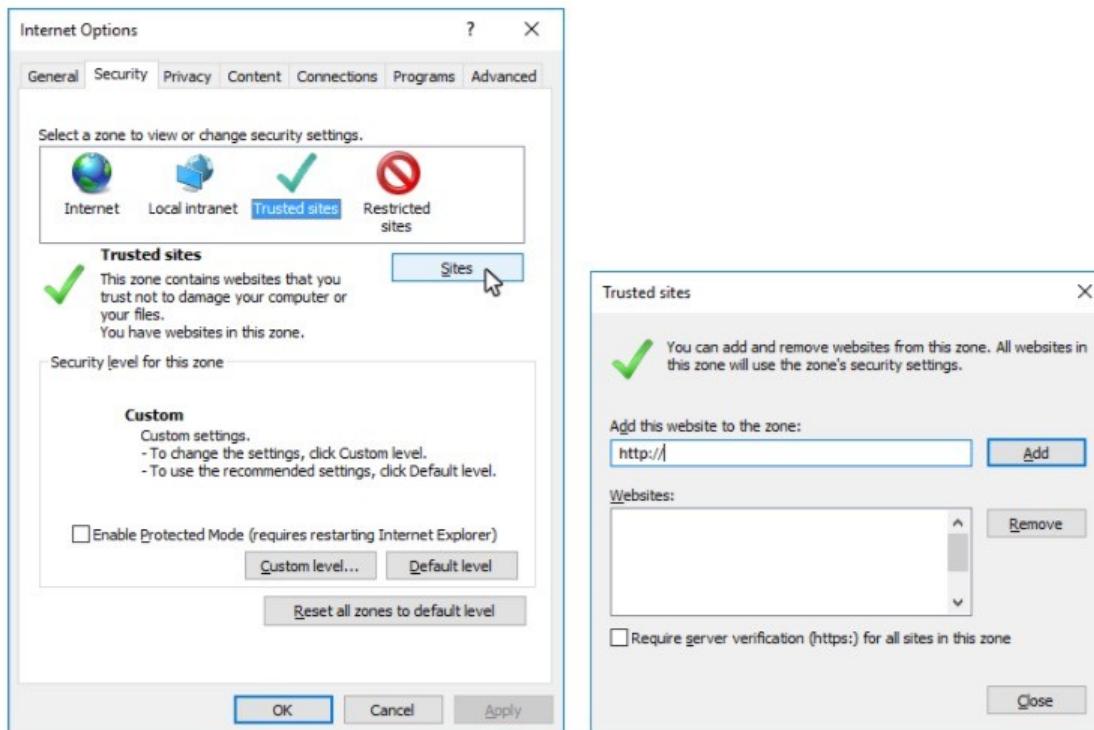
### Add Recorder to Trusted Sites

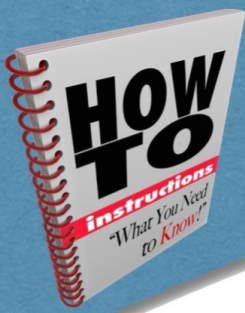
Adding the recorder to the list of trusted sites allows you to lower the security settings and use Quantify without having to constantly deal with security alerts.

To add the recorder to the trusted sites list:

1. Open Internet Explorer and go to **Tools > Internet Options**.
2. Select the **Security** tab, then select **Trusted Sites** and click the **Sites** button.
3. In the **Trusted Sites** dialog, enter `http://` and the IP address or hostname you use to access recorder in the **Add this website to the zone** field and click **Add**. For example, <http://192.168.1.100> or <http://redboxserver>

Note that if you access the recorder using https instead, make sure that the **Require server verification** option is ticked. Otherwise, uncheck this option if you access the recorder using http. Most users only use http so typically this option should be unchecked.





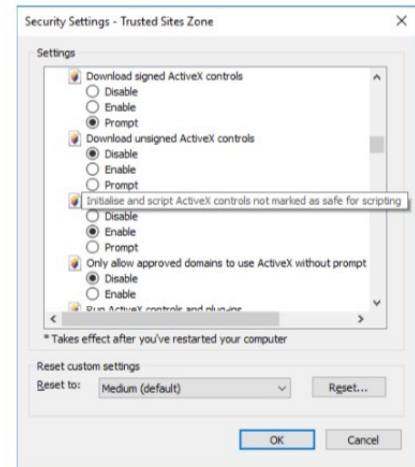
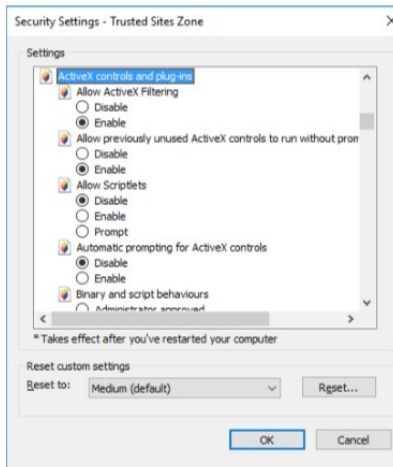
## How to Configure Internet Explorer for Quantify

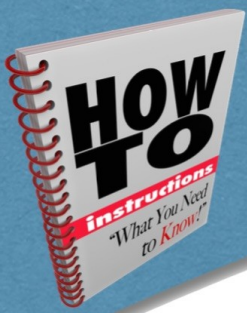
### Enable Active X Scripts

Enabling Active X Scripts is essential for using the Media Player in Quantify Search & Replay.

To enable Active X Scripts:

1. Open Internet Explorer and go to **Tools > Internet Options**.
2. Select the **Security** tab, then select **Trusted Sites** and click the **Custom level** button.
3. Scroll to the **Active X Controls and Plug-ins** section, find **Initialize and script Active X controls not marked as safe for scripting** and select **Enable**. Note that this setting is **only** applied to trusted sites, so security is maintained.





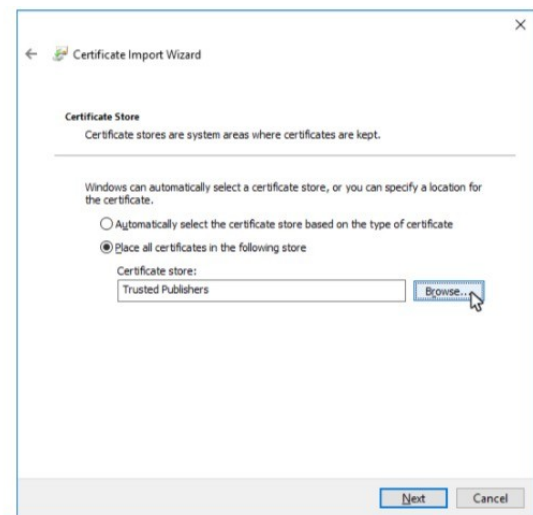
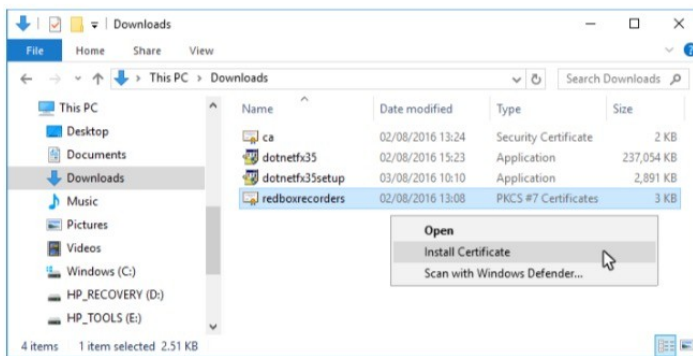
## How to Configure Internet Explorer for Quantify

### Install Media Player Certificate

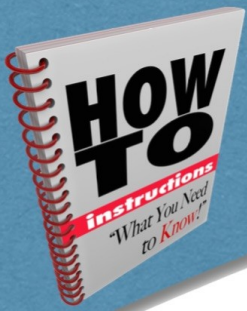
Installing the Red Box Media Player certificate is essential for using the Media Player in Quantify Search & Replay.

To install the Media Player certificate:

1. Login to Quantify as usual and click link in upper right for **Options > Support Centre > Downloads**.
2. Click the **Media Player install certificate** link to download the Media Player certificate and save the **redboxrecorders.p7b** file to an easy to find location.
3. In Windows explorer, locate the **redboxrecorders.p7b** certificate file you saved.
4. Right click the **redboxrecorders.p7b** file, and select **Install Certificate**.
5. Follow the on-screen instructions to install the certificate. On the **Certificate Store** screen, click **Place all certificates in the following store**, then click **Browse** and select **Trusted Publishers**.
6. Click **Next** to finish installing certificate.



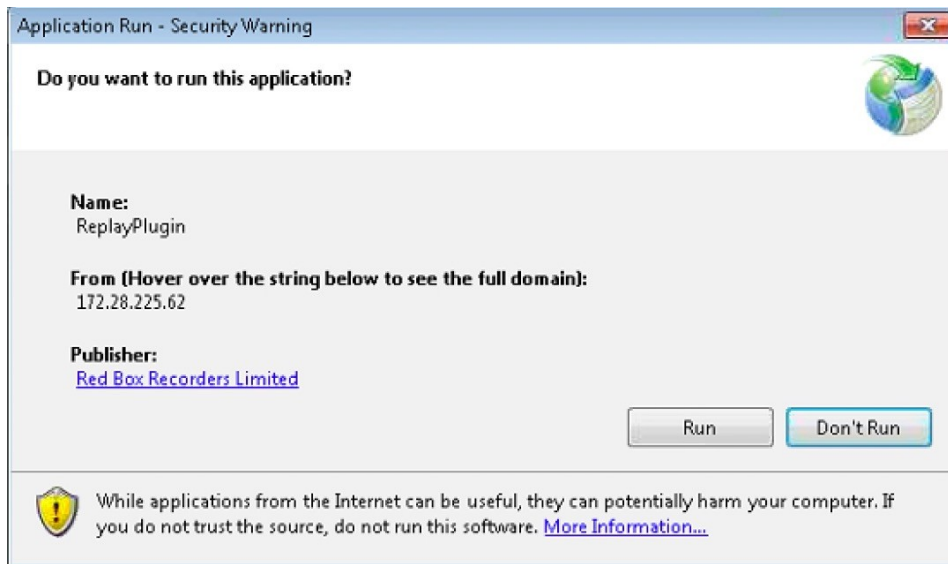
Once all the above has been successfully completed, refresh or close and restart Internet Explorer and attempt to replay calls.



## How to Configure Internet Explorer for Quantify

### Install Replay Plugin

If a Pop Up window appears when you login to Quantify asking if you want to run this application, click **Run** to install the required Media Player Replay Plugin.



For additional inquiries you can contact us at:  
[support@interactionic.com](mailto:support@interactionic.com)  
(800) 285-2950

